



**Aquatic Invasive Plants
Control Program Project Area
Northern Sites**

**Aquatic Invasive Plants
Control Program Zones**

Single Treatment Zones

- Zone 1
- Zone 2
- Zone 3
- Zone 4
- Zone 5
- Zone 6
- Zone 7
- Zone 8
- Zone 9
- Zone 10

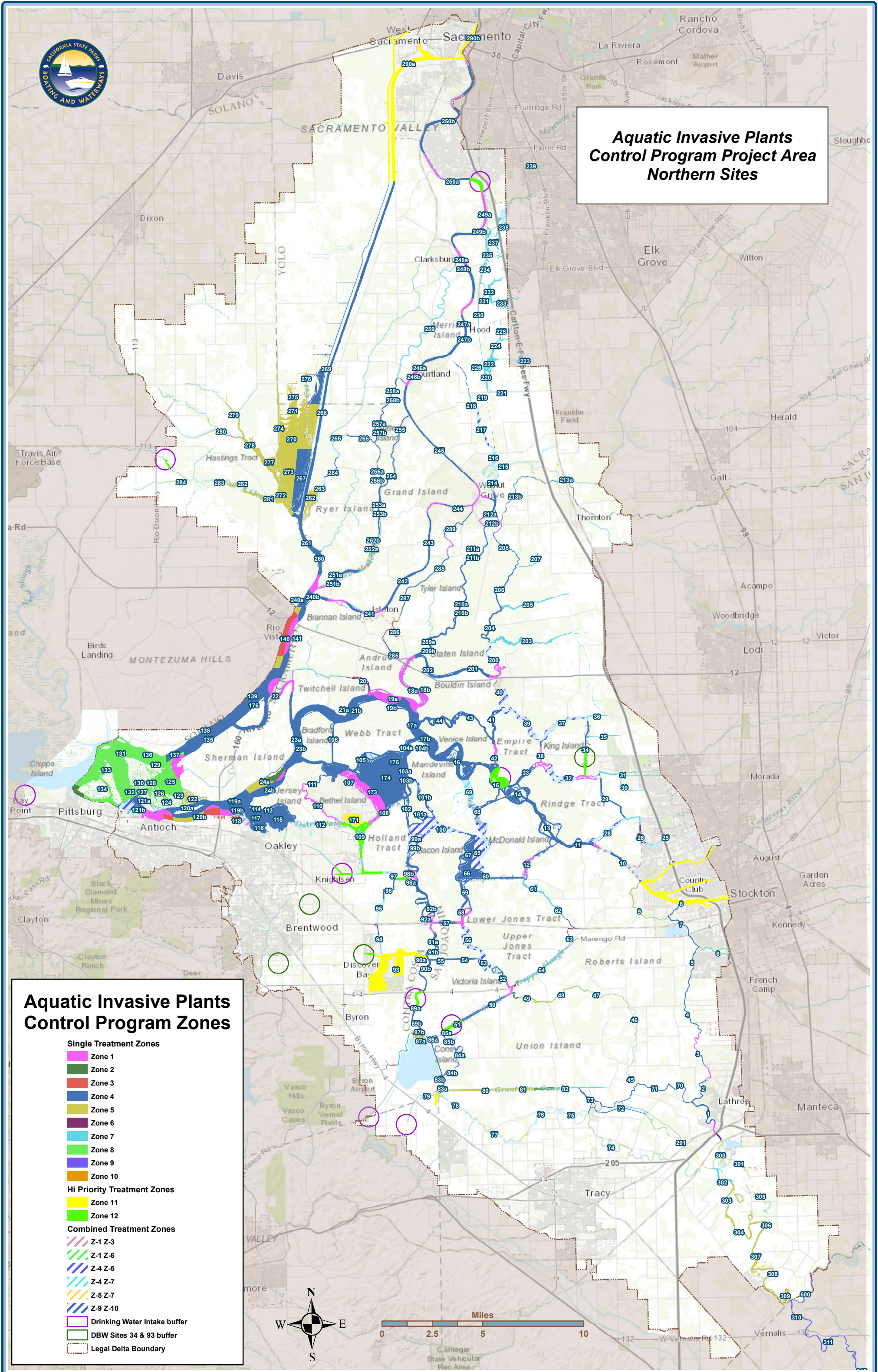
Hi Priority Treatment Zones

- Zone 11
- Zone 12

Combined Treatment Zones

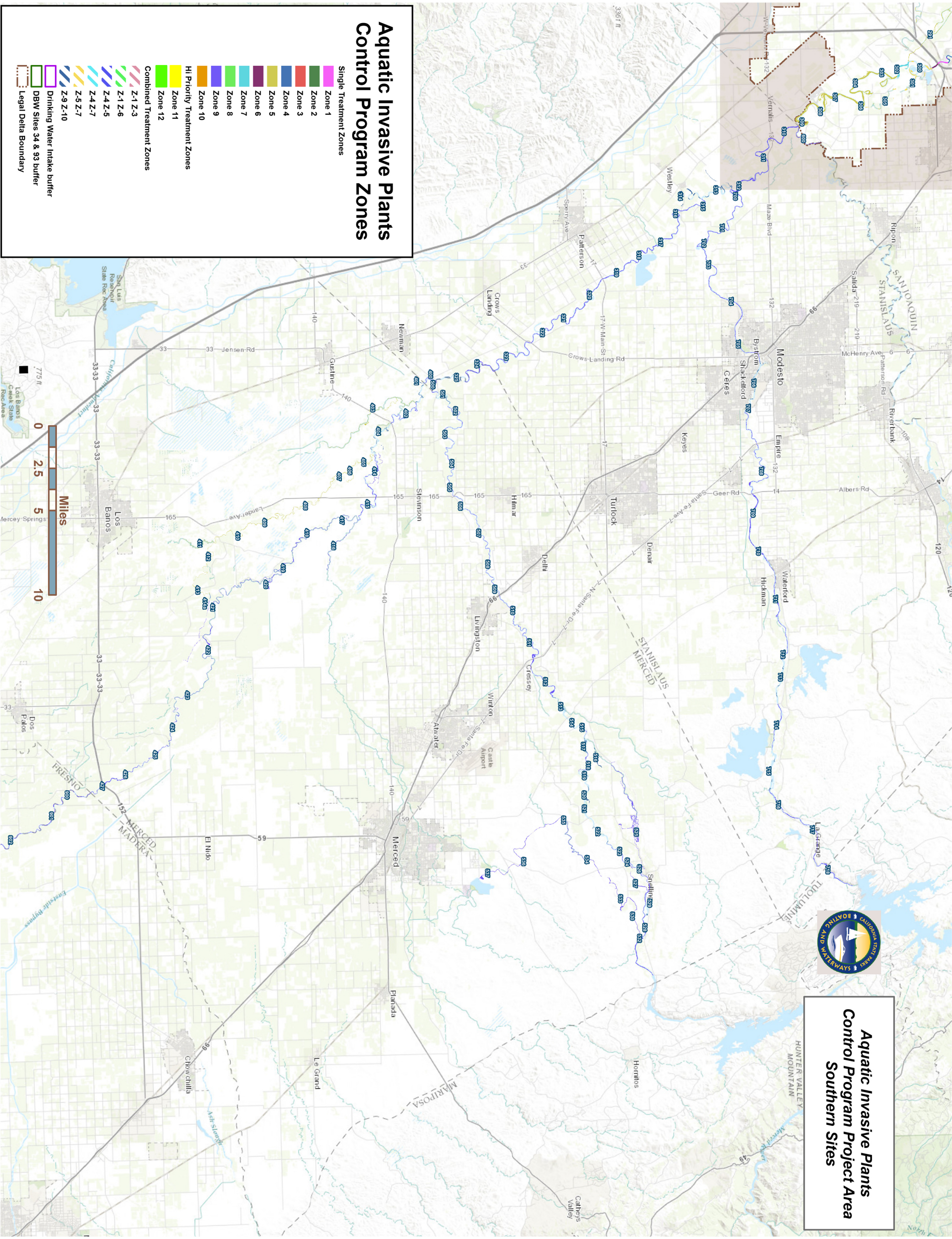
- Z-1 Z-3
- Z-1 Z-6
- Z-4 Z-5
- Z-4 Z-7
- Z-5 Z-7
- Z-9 Z-10

- Drinking Water Intake buffer
- DBW Sites 34 & 93 buffer
- Legal Delta Boundary



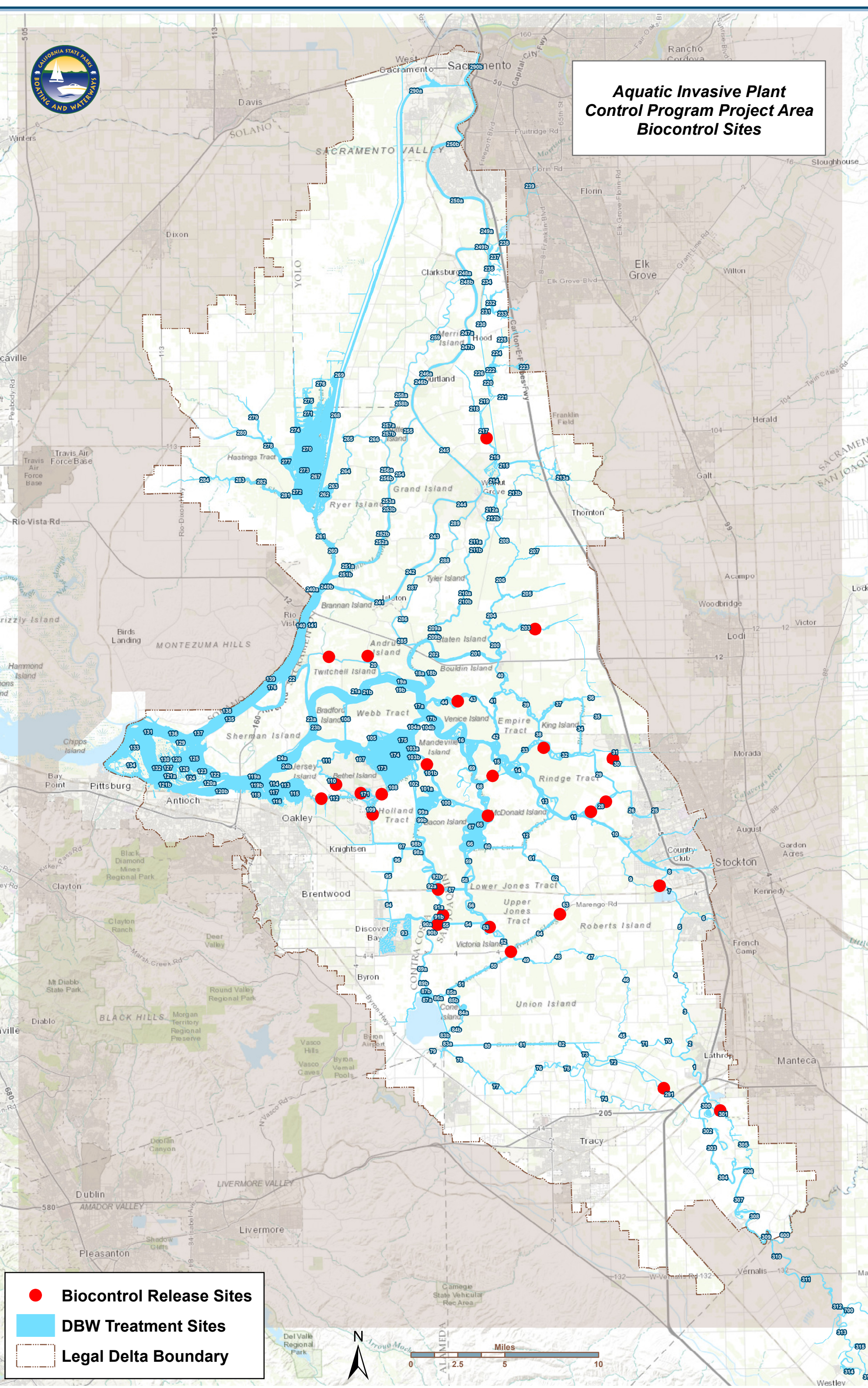


**Aquatic Invasive Plants
Control Program Project Area
Southern Sites**

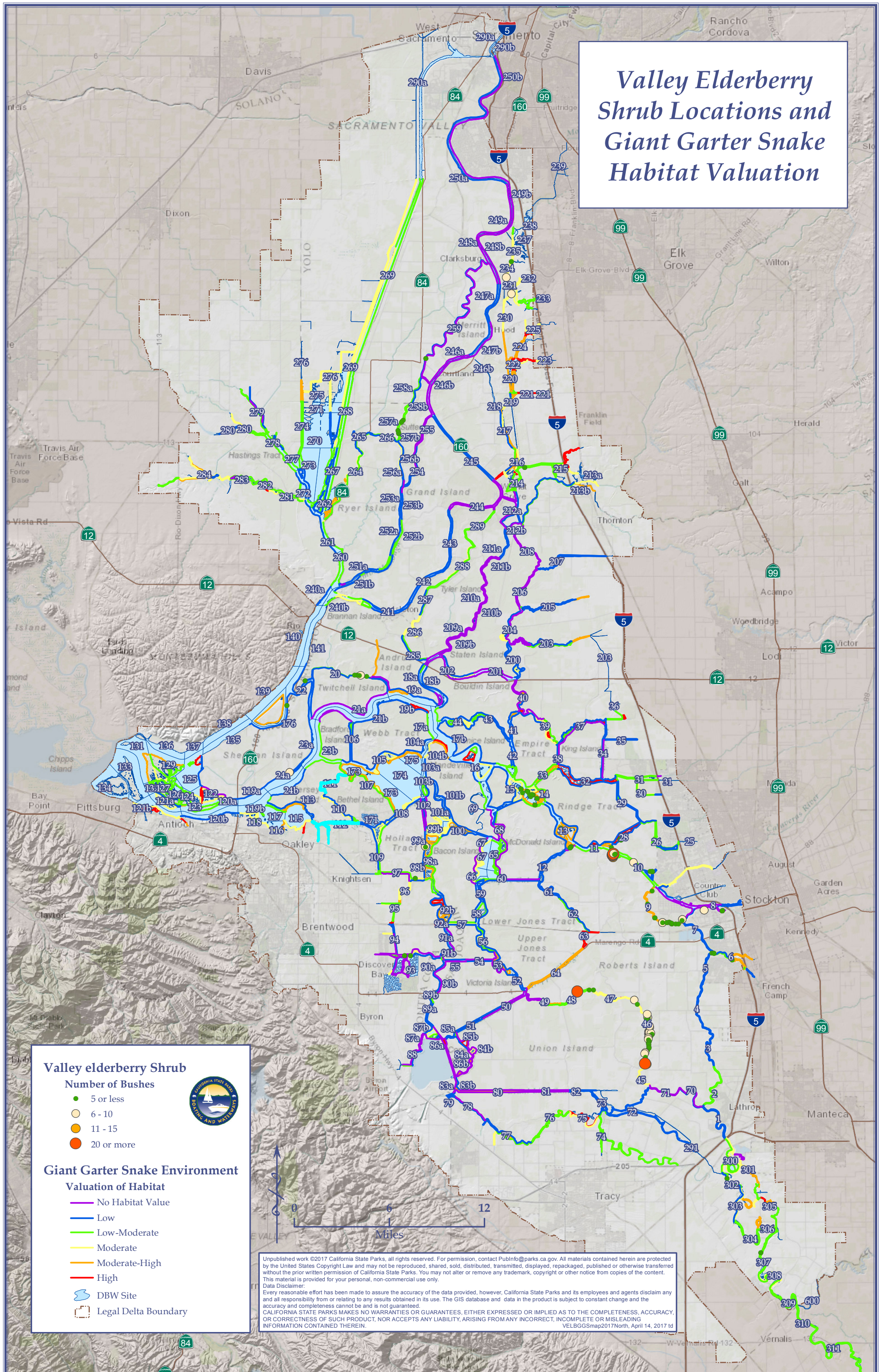


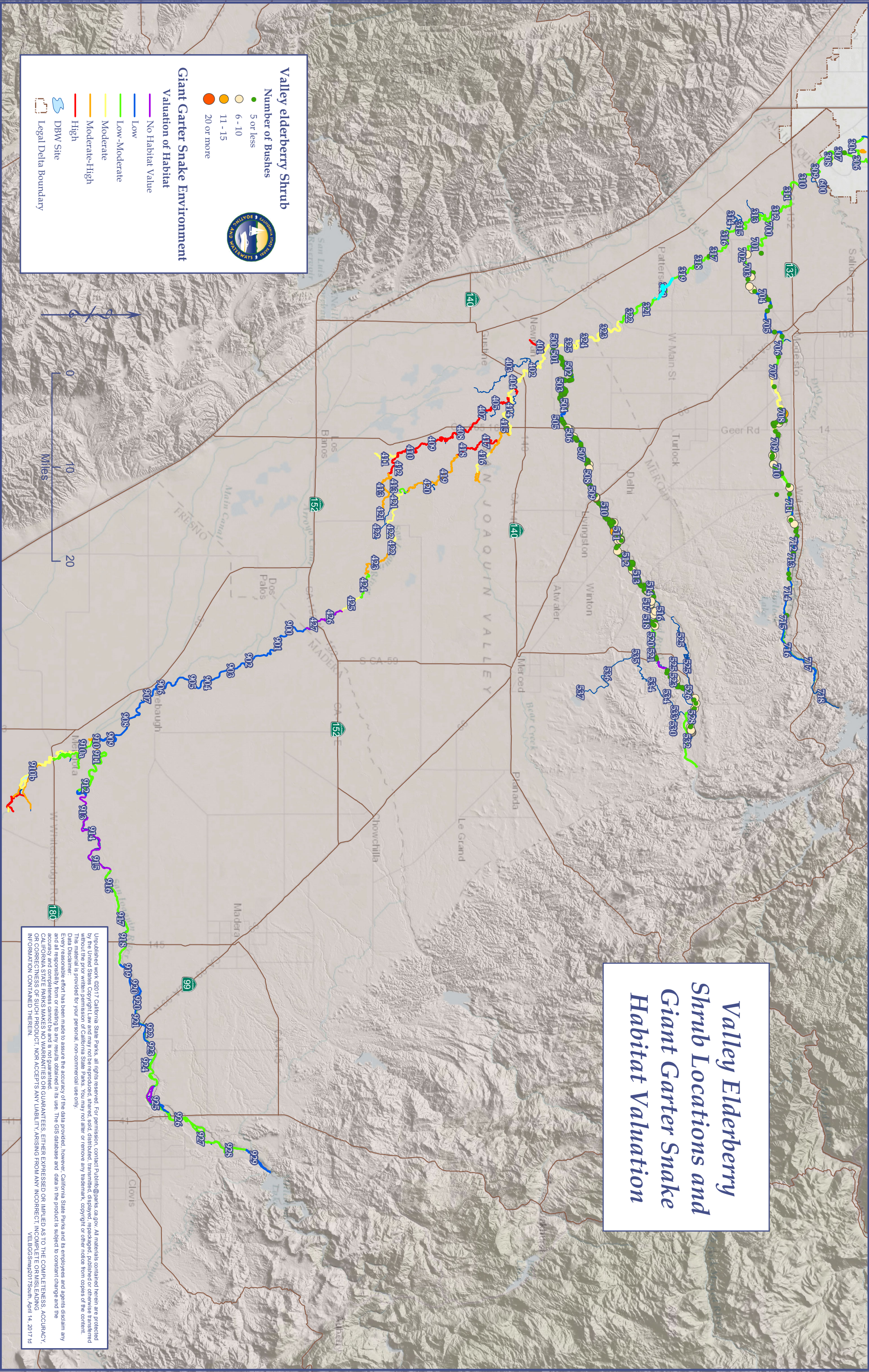
**Aquatic Invasive Plants
Control Program Zones**

- Single Treatment Zones**
- Zone 1
 - Zone 2
 - Zone 3
 - Zone 4
 - Zone 5
 - Zone 6
 - Zone 7
 - Zone 8
 - Zone 9
 - Zone 10
 - Hi Priority Treatment Zones**
 - Zone 11
 - Zone 12
- Combined Treatment Zones**
- Z-1 Z-3
 - Z-1 Z-6
 - Z-4 Z-5
 - Z-4 Z-7
 - Z-5 Z-7
 - Z-8 Z-10
- Drinking Water Intake buffer**
- DBW Sites 34 & 93 buffer**
- Legal Delta Boundary**



Valley Elderberry Shrub Locations and Giant Garter Snake Habitat Valuation





Valley Elderberry Shrub Locations and Giant Garter Snake Habitat Valuation

Unpublished work ©2017 California State Parks, all rights reserved. For permission, contact PublicInfo@parks.ca.gov. All materials contained herein are protected by the United States Copyright Law and may not be reproduced, shared, sold, distributed, transmitted, displayed, repackaged, published or otherwise transferred without the prior written permission of California State Parks. You may not alter or remove any trademark, copyright or other notice from copies of the content. This material is provided for your personal, non-commercial use only.

Data Disclaimer:

Every reasonable effort has been made to assure the accuracy of the data provided, however, California State Parks and its employees and agents disclaim any and all responsibility from or relating to any results obtained in its use. The GIS database and data in the product is subject to constant change and the CALIFORNIA STATE PARKS AND RECREATION DEPARTMENT MAKES NO REPRESENTATION OR GUARANTEES, EITHER EXPRESSED OR IMPLIED AS TO THE COMPLETENESS, ACCURACY, OR CORRECTNESS OF SUCH PRODUCT, NOR ACCEPTS ANY LIABILITY ARISING FROM ANY INCOMPLETE, INCOMPLETE OR MISLEADING INFORMATION CONTAINED THEREIN.

VEI.BG5Shmap2017South_April 14, 2017.td