

State of California

FLOOD HAZARD MITIGATION PLAN FOR THE SACRAMENTO-SAN JOAQUIN DELTA

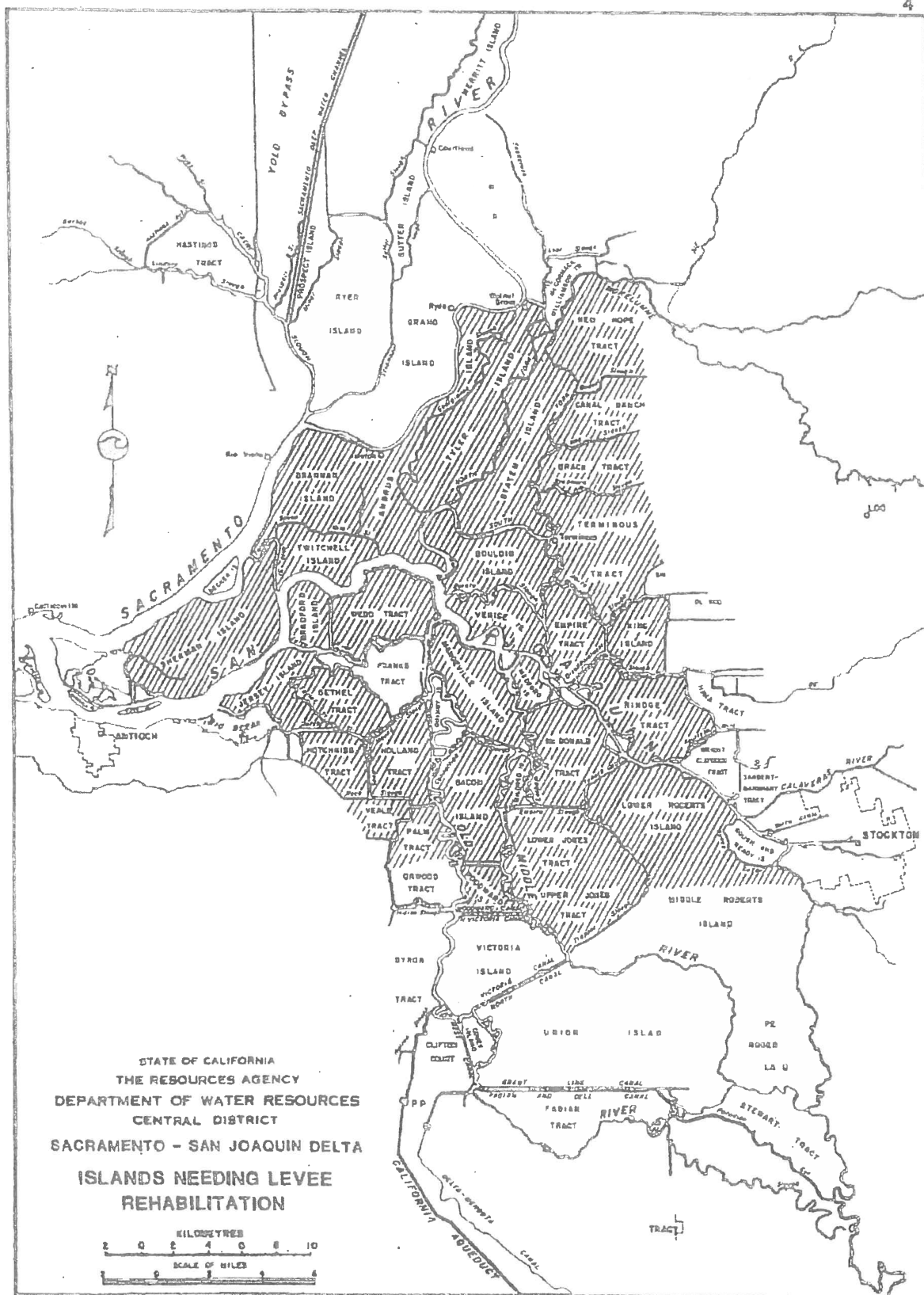
Covering portions of Contra Costa, Sacramento,
San Joaquin, Solano, and Yolo Counties

Disaster Declarations

**FEMA-632-DR, FEMA-651-DR, FEMA-669-DR,
FEMA-677-DR**

**Prepared by
Department of Water Resources
for
Office of Emergency Services**

September 15, 1983





October 2018

California Department of Water Resources
FLOOD EMERGENCY RESPONSE PROGRAM

Delta Flood Emergency Management Plan

Supplement C

Water Project Export Disruptions
for Multiple-Island Breach Scenarios
using the Delta Emergency
Response Tool



C20215
CDWA 3/24/2021
7-15/2021 Visual
Attachment I Cover

Attachment I

Location of Levee Breaches



Update on In Delta Freshwater Pathway

Bay Delta Committee

Item 6a

January 26, 2021

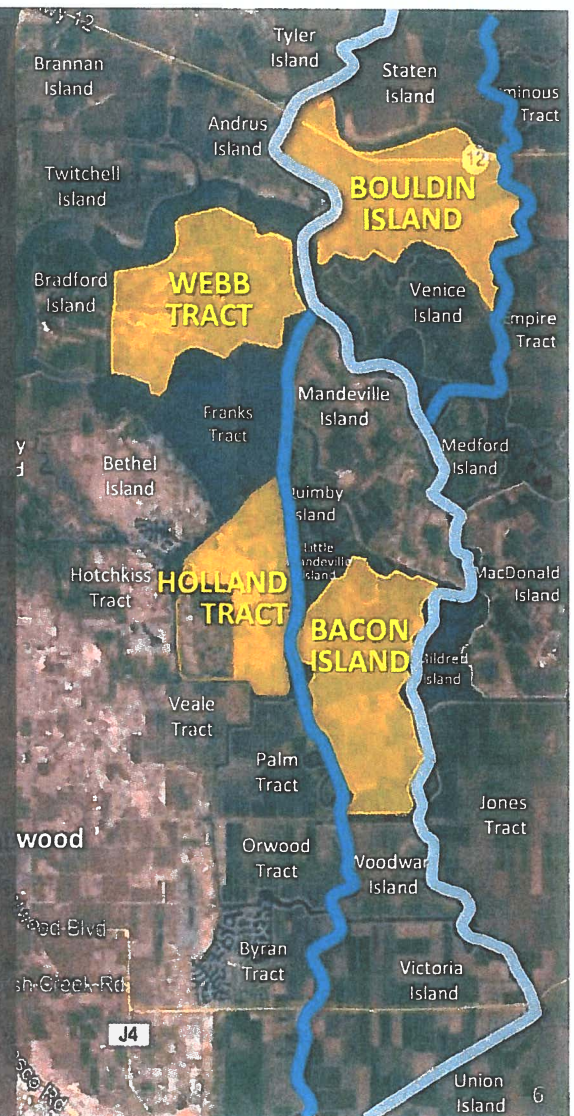
Board Summary

Accomplishments

- Freshwater Pathway approach included in State Emergency Response/Preparedness Plan
- Regional warehouses & stockpiles completed
- Regional & local Delta seismic vulnerability analyses conducted
- Potential 3-yr outage reduced to < 6 months
- Major portions of Middle River levee improved to meet mitigate flood and seismic events

Ongoing Activities

- Evaluate new levee monitoring technologies
- Continue developing on-island stockpiles
- Further analysis of improving Old River levees
- Recommend update of 1982 State levee std.
- Continue targeted levee improvements



Risk Mitigation Options

Storage Releases

- Normal releases has minimal impact on reducing salinity
- Extreme releases reduces salinity but causes severe agric./urban/fishery water supply problems

Operable Barriers

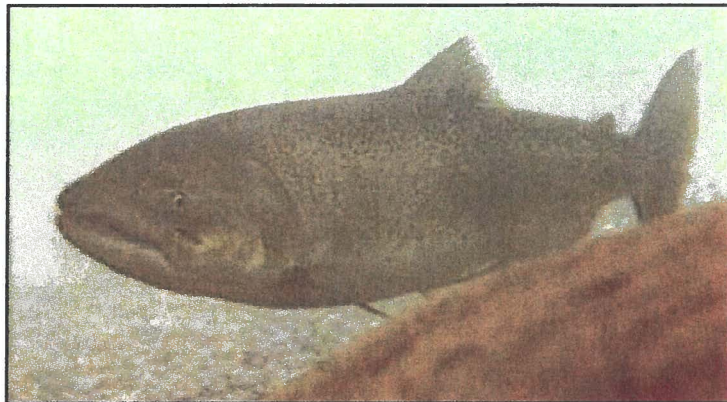
Freshwater Pathway

Oroville Reservoir

Normal Reservoir Release
1,000,000 - 1,500,000 AF
2 months after emergency

Extreme Reservoir Release
5,800,000 AF
2 months after emergency

Insights into the Problems, Progress, and Potential Solutions for Sacramento River Basin Native Anadromous Fish Restoration



Spring-Run Chinook Salmon in Mill Creek, California (Photo by Dave Vogel)

April 2011

Prepared for:

**Northern California Water Association
and
Sacramento Valley Water Users**

Prepared by:

**Dave Vogel, Senior Scientist
Natural Resource Scientists, Inc.
P.O. Box 1210
Red Bluff, CA 96080
dvogel@resourcescientists.com**

C20215
CDWA Vogel Cover
3/24/2021
7/15/2021 Visual



Figure 72. Liberty Island in the north Delta before and after flooding.



Figure 73. Liberty Island in the north Delta before and after flooding showing locations of narrow breaches in the levee.



Figure 74. Locations (squares) where predatory striped bass were acoustic-tagged with transmitters during the winter of 2008 – 2009 in the north Delta near Liberty Island (D. Vogel, unpublished data).

ER P5 (cont.)

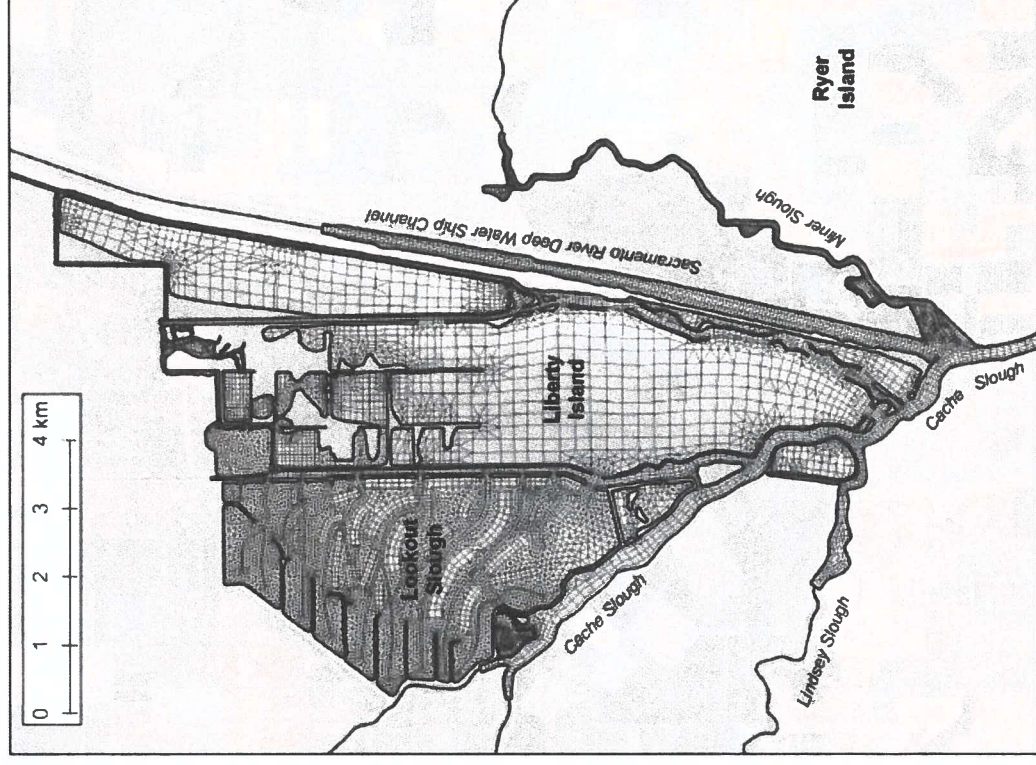
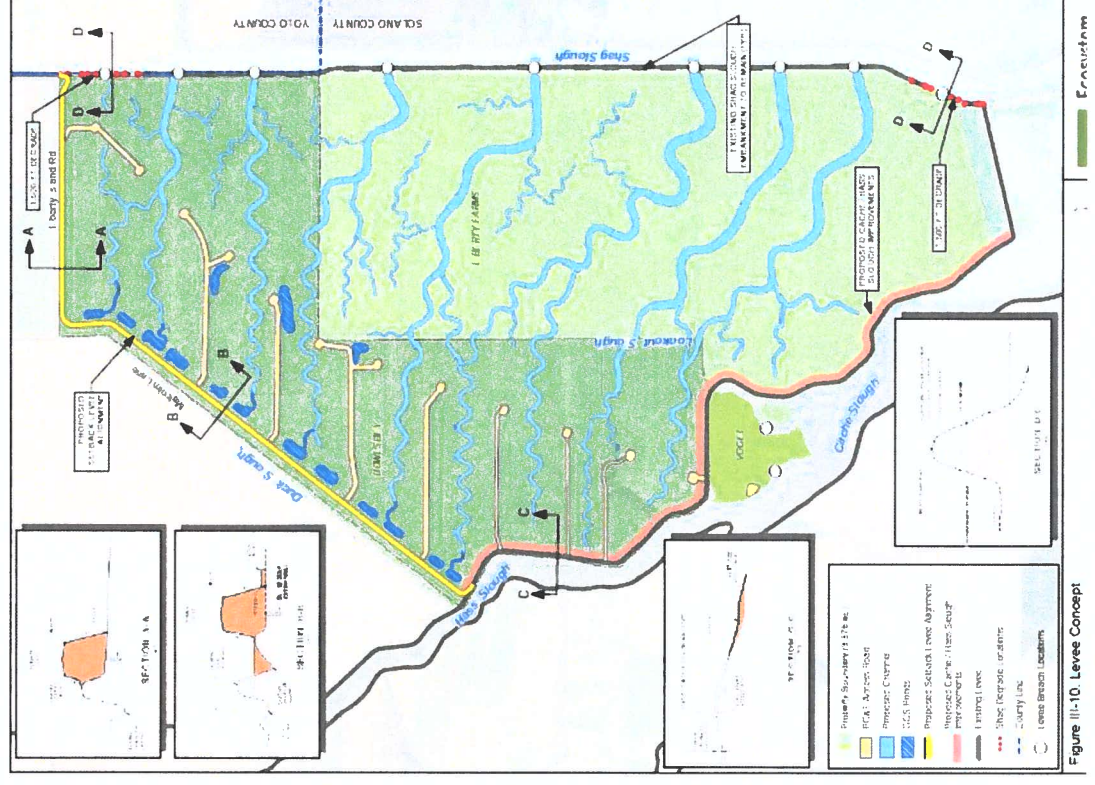


Figure 3 Detail view of the model configuration with Lookout Slough restoration.

C20215
CDWA Regional View
5/22/2021 Pg. 13
7/15/2021 Visual

ERP 5 (cont.)



C20215
CDWA Project View
5/22/2021 Pg. 14
7/15/2021 Visual

