



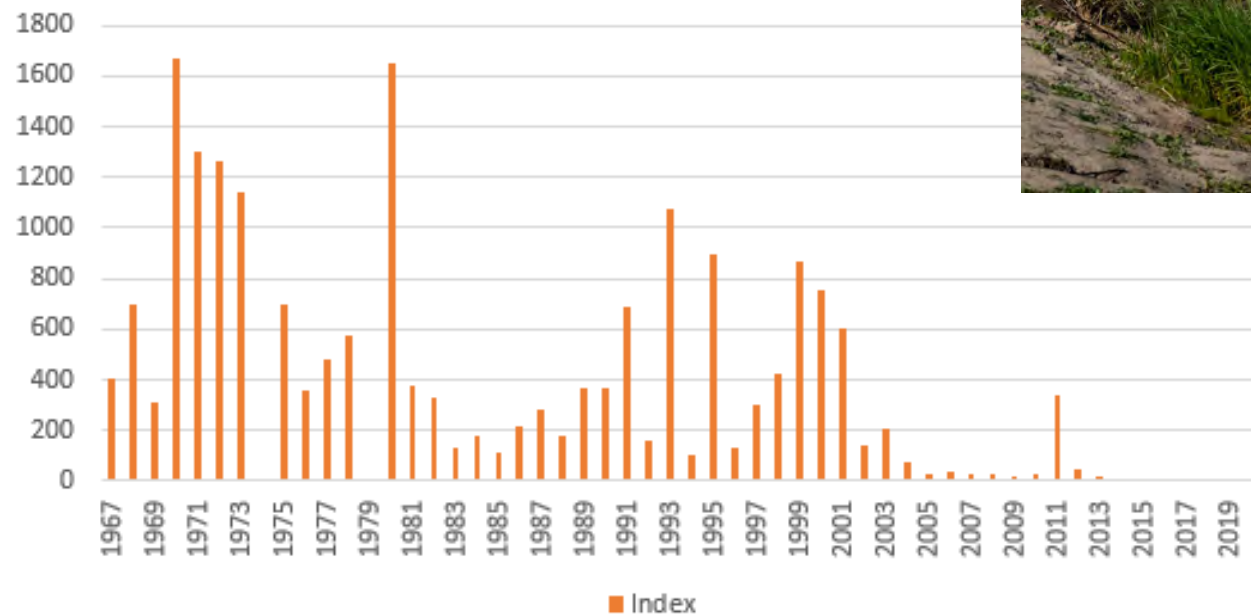
CALIFORNIA DEPARTMENT OF  
WATER RESOURCES

# Lookout Slough Tidal Habitat Restoration & Flood Improvement Project

Delta Stewardship Council Hearing  
July 15, 2021

# Opening Remarks

**Delta Smelt Abundance Index**  
Fall Midwater Trawl Survey, 1967-2020  
(0 fish captured in 2018, 2019, and 2020)



# Best Available Science & Substantial Evidence Standard



# Recreational Use Surveys/Data

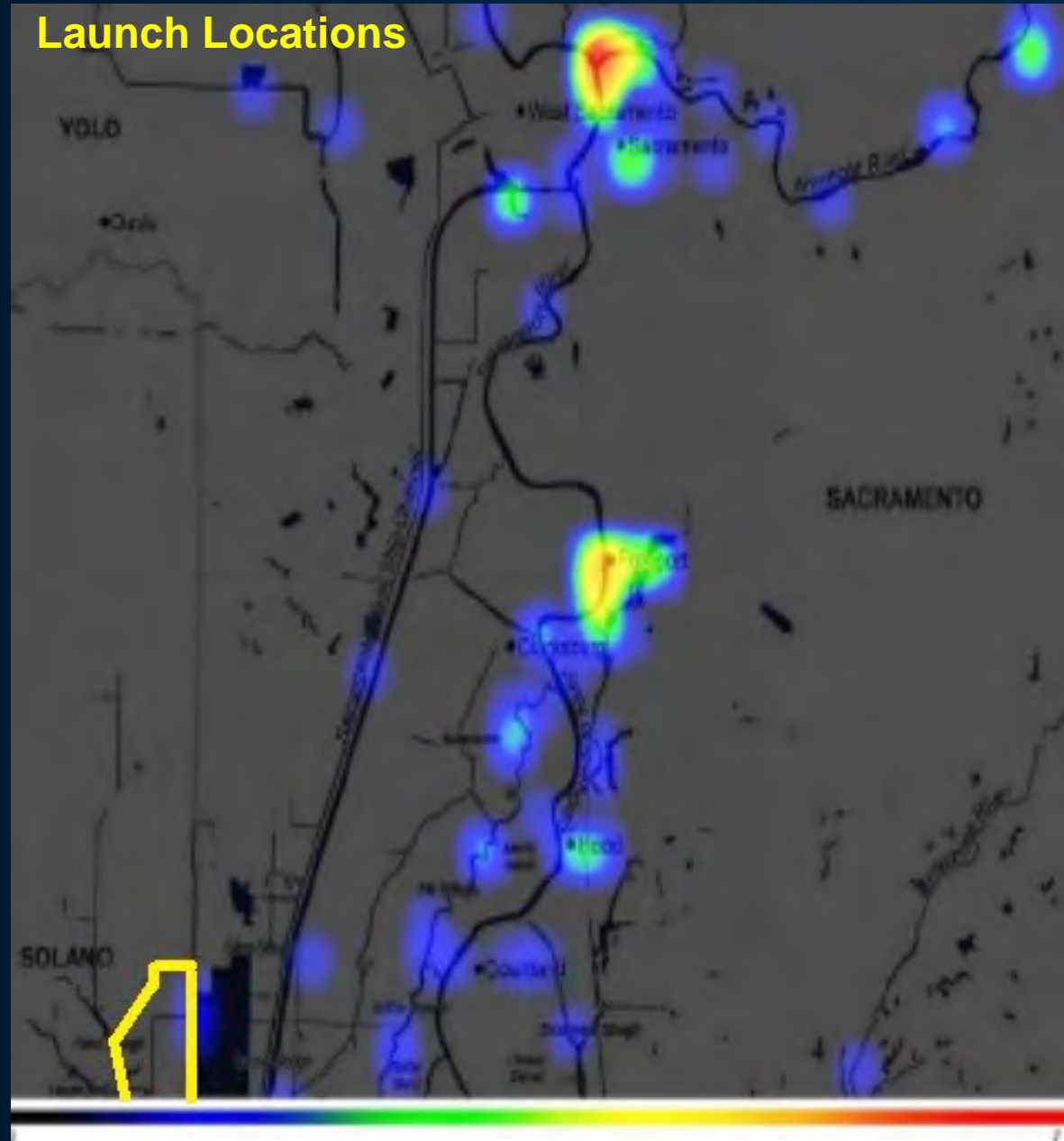
- 6 sources of data collected by federal and state agencies:
  - CA State University, Sacramento (CSUS) for Delta Protection Commission (2019)
  - CA Delta Chamber of Commerce (2019)
  - National Marine Fisheries Service/NOAA (2018)
  - CSUS for Delta Protection Commission (2017)
  - CA Department of Parks and Recreation (2014)
  - Delta Stewardship Council (2013)

# CA State University, Sacramento Studies

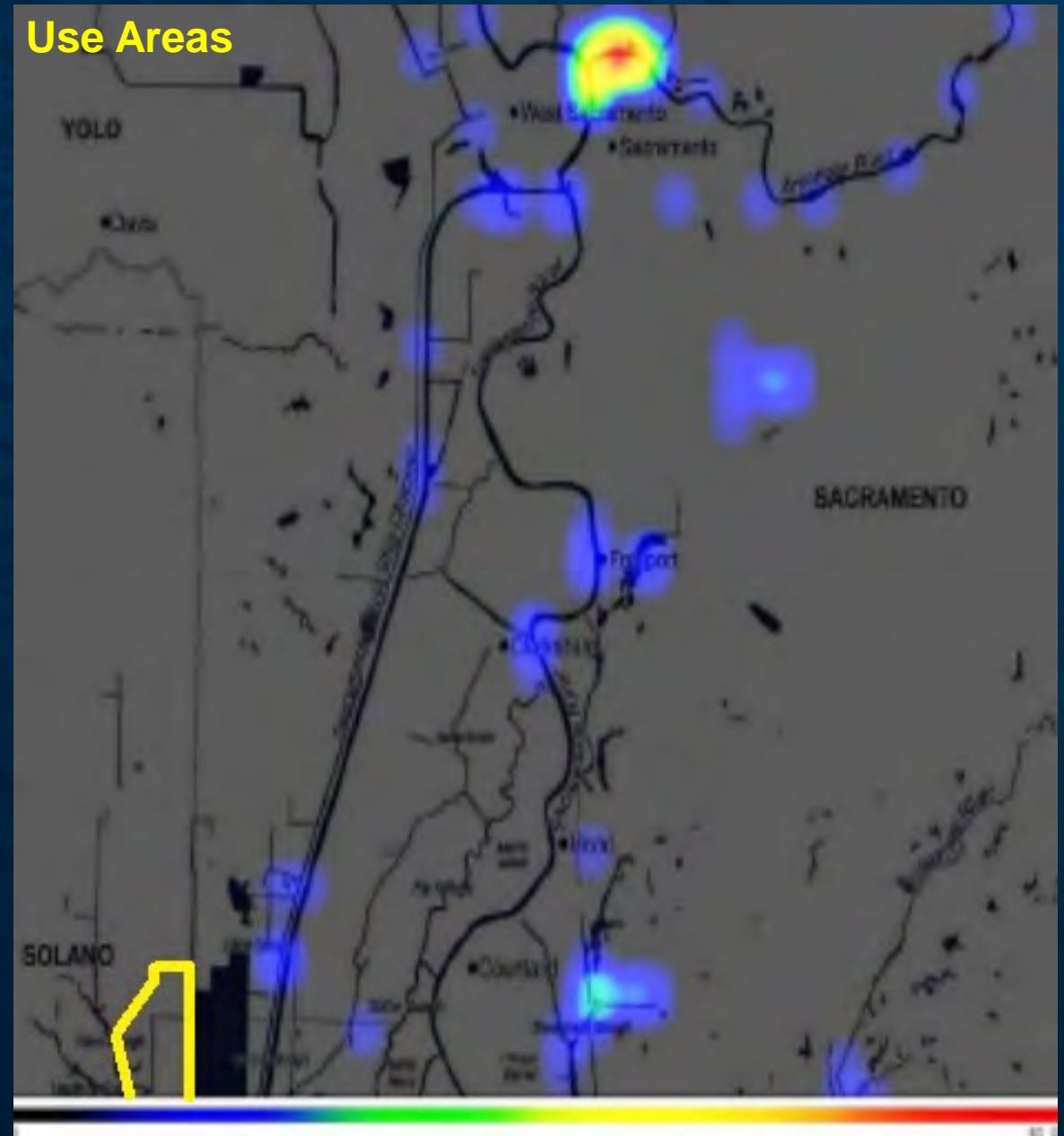
- Methods were designed to be **inclusive**:
  - Used a statewide sample of boater registrations
  - Weighted the sample to emphasize boaters in or near the Delta
  - Supplemented with focus groups that targeted difficult to reach populations

# 2017 Study: Non-motorized Boating Use

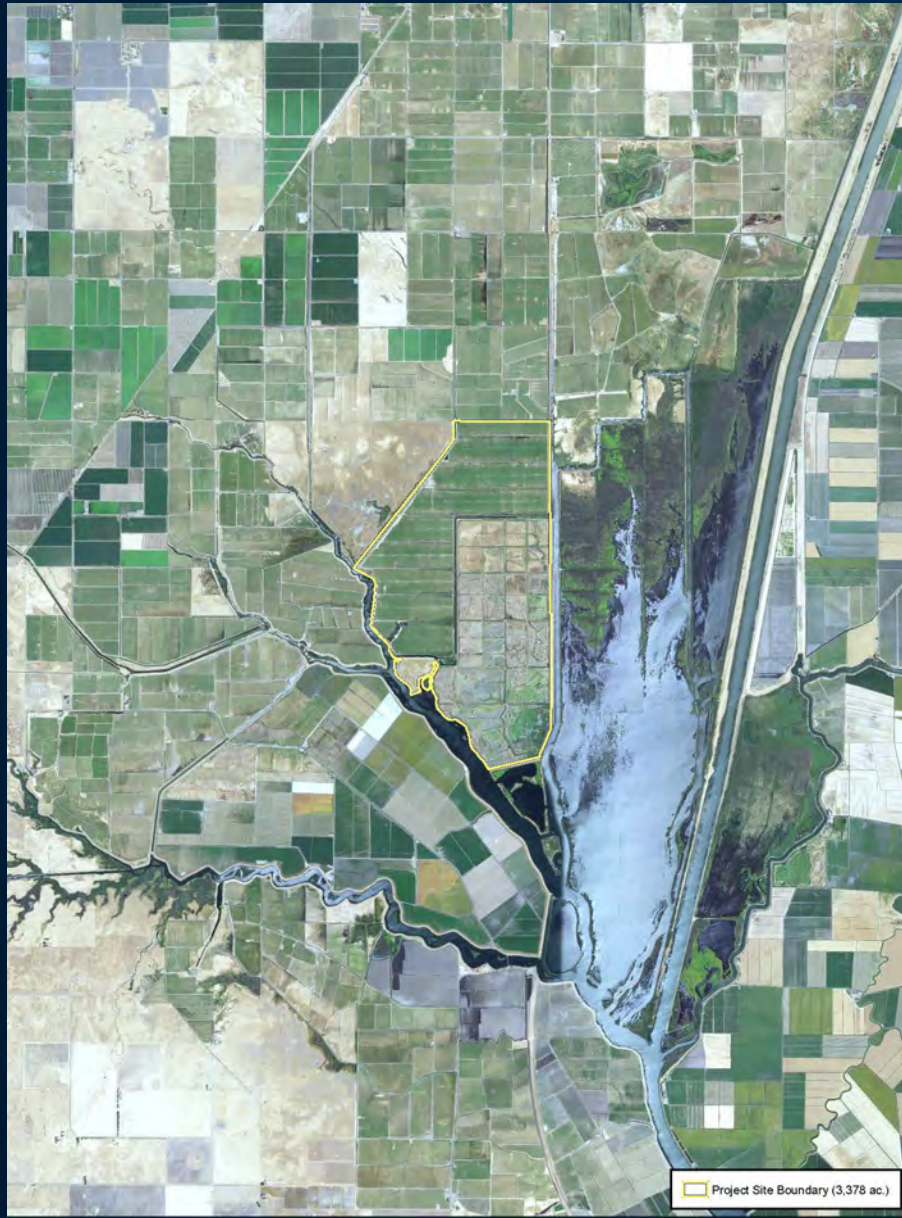
Launch Locations



Use Areas



# Respecting Local Land Use/Siting



# LIER: No Facilities

Recreation

History

## Recreational Opportunities



**Activities:** fishing (from boat or shore), waterfowl hunting, and wildlife viewing

No access fee

Boat-in users are advised to be extremely cautious while accessing the reserve. Because the island was a fully functional farm before it was suddenly flooded, there may be hazards beneath the water. While much of the island is completely flooded, it still remains fairly shallow.

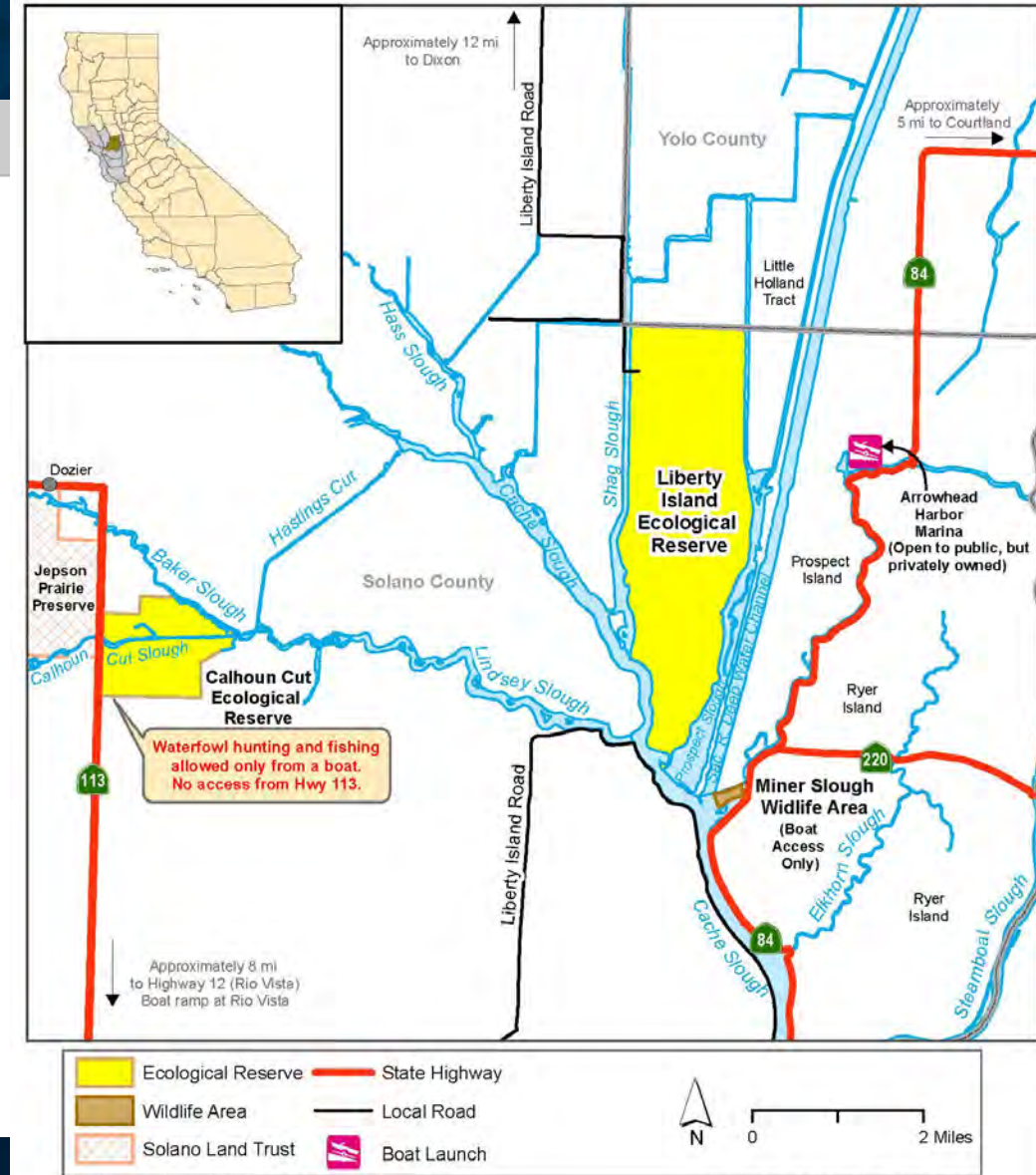
**Hunting:** Open to waterfowl hunting seven days per week during the regular waterfowl season. Hunters may use temporary floating blinds. Hunting blinds must be removed daily.

**Facilities:** None

**NOTE:** Visitors are responsible for knowing and complying with all regulations pertaining to the use of Department lands.

Please refer to the Public Uses on State and Federal Lands section of the [Waterfowl, Upland Game, and Public Use Regulations \(PDF\)](#) booklet for both statewide and property-specific regulations. A searchable [Property-specific regulations table](#) is also available online.

### California Department of Fish and Wildlife Bay Delta Region LIBERTY ISLAND ECOLOGICAL RESERVE Solano County



# Project Goals

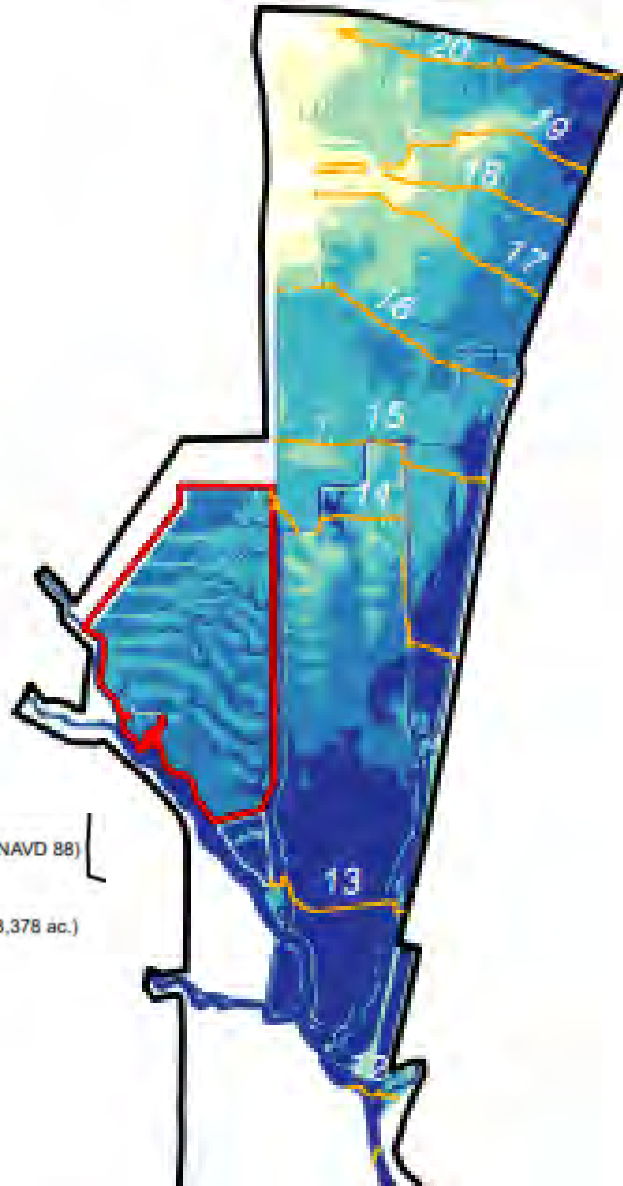


**Habitat Restoration**



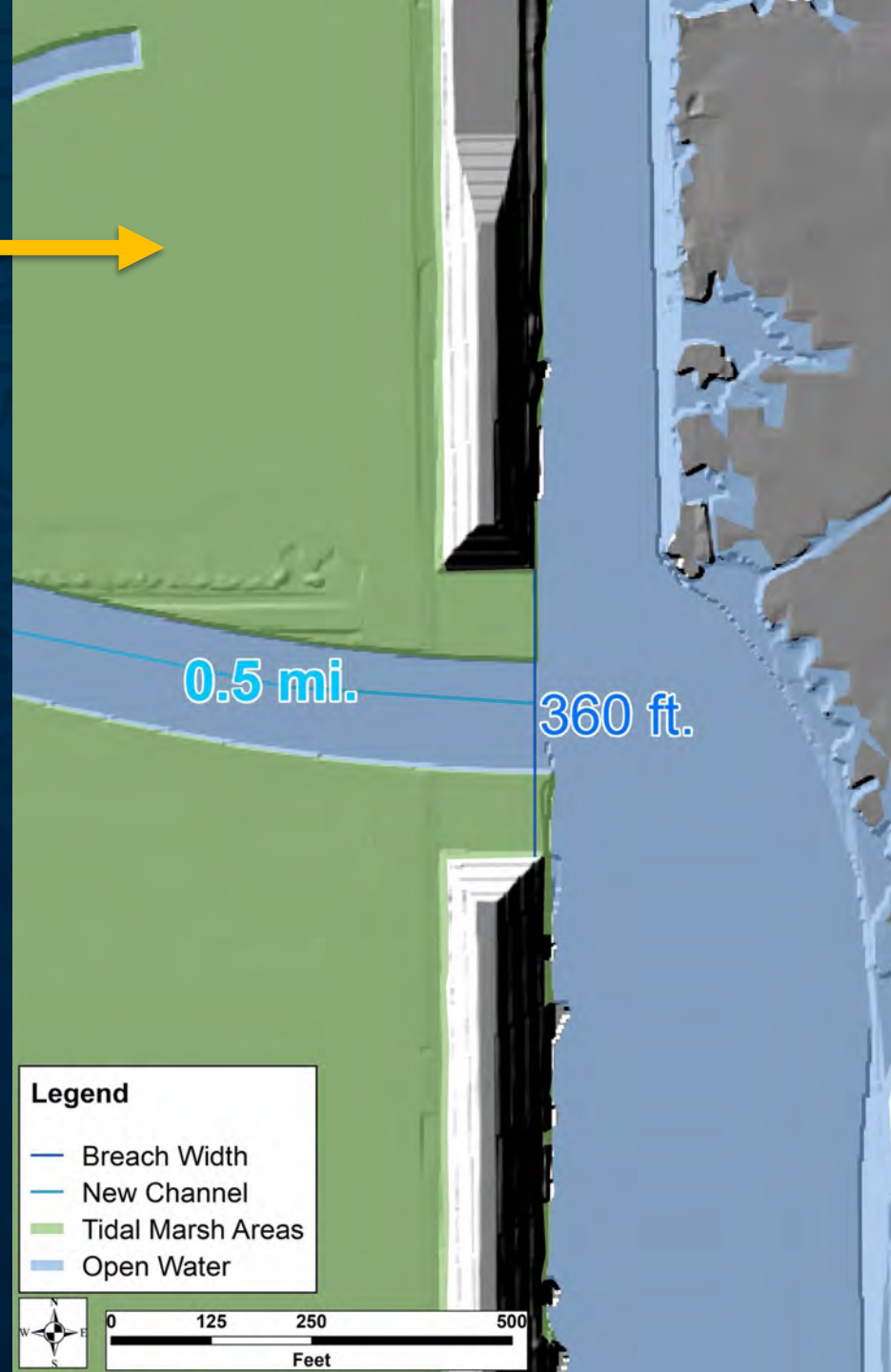
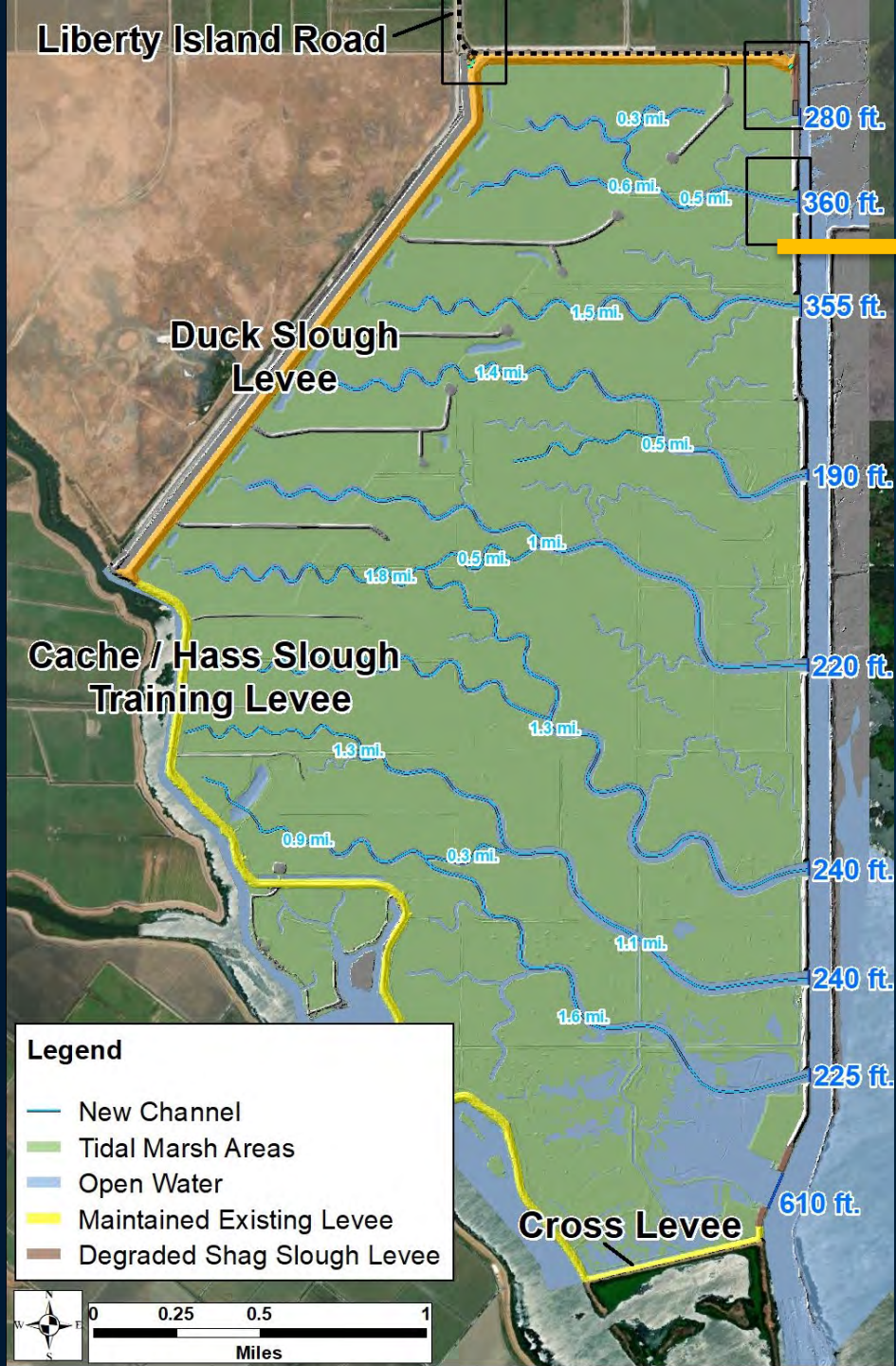
**Flood Protection**

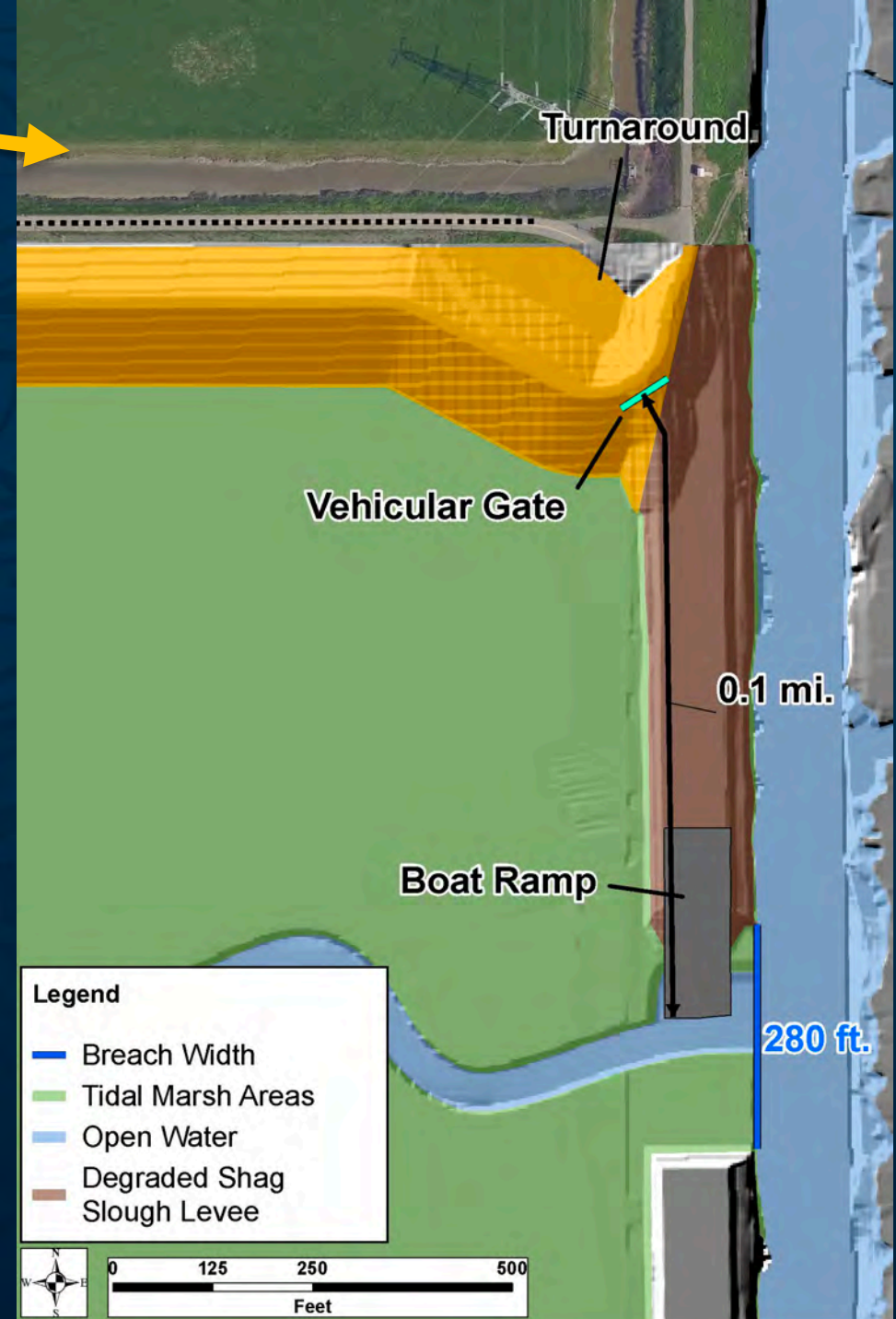
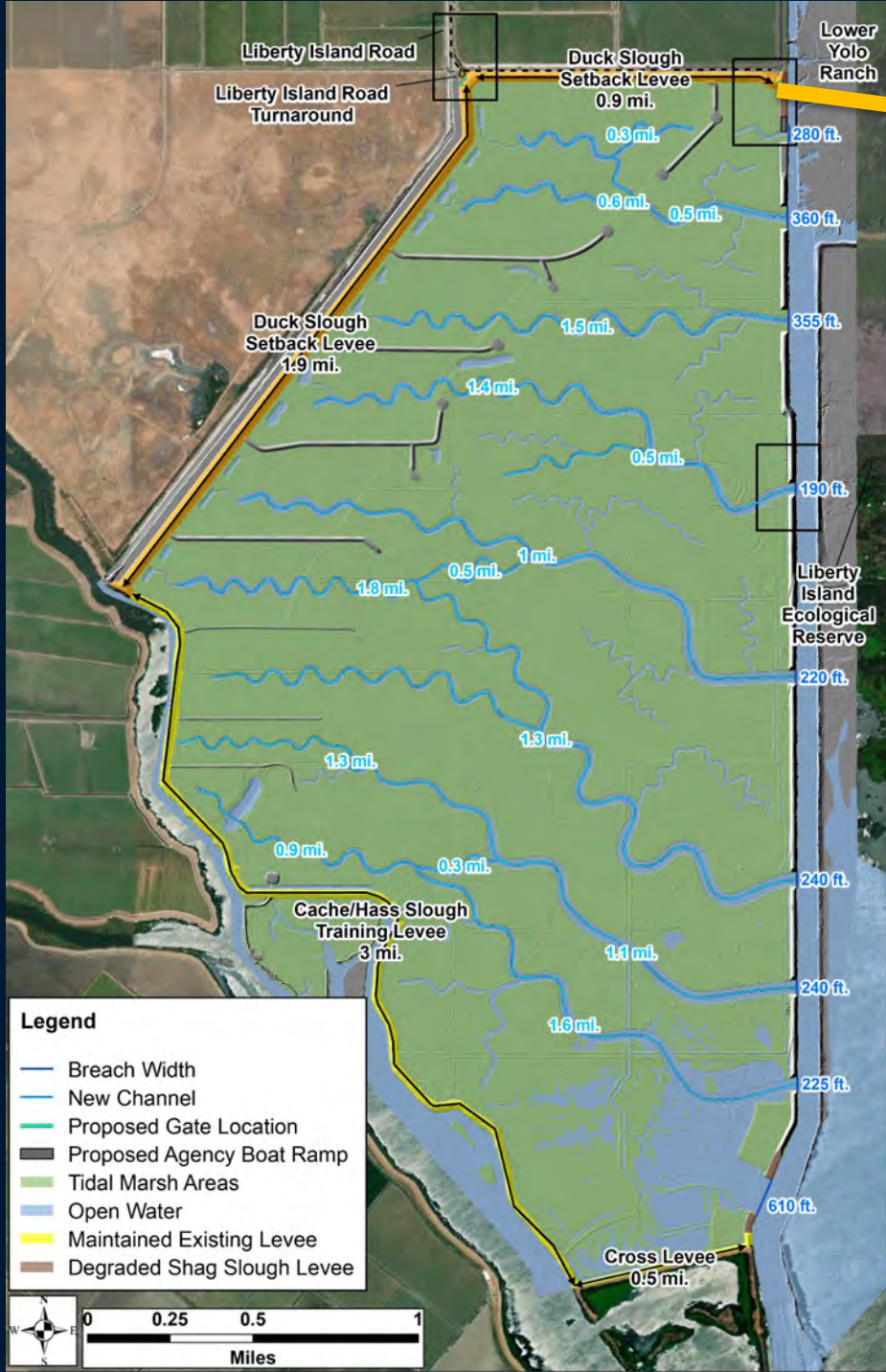
# Design & Feasibility



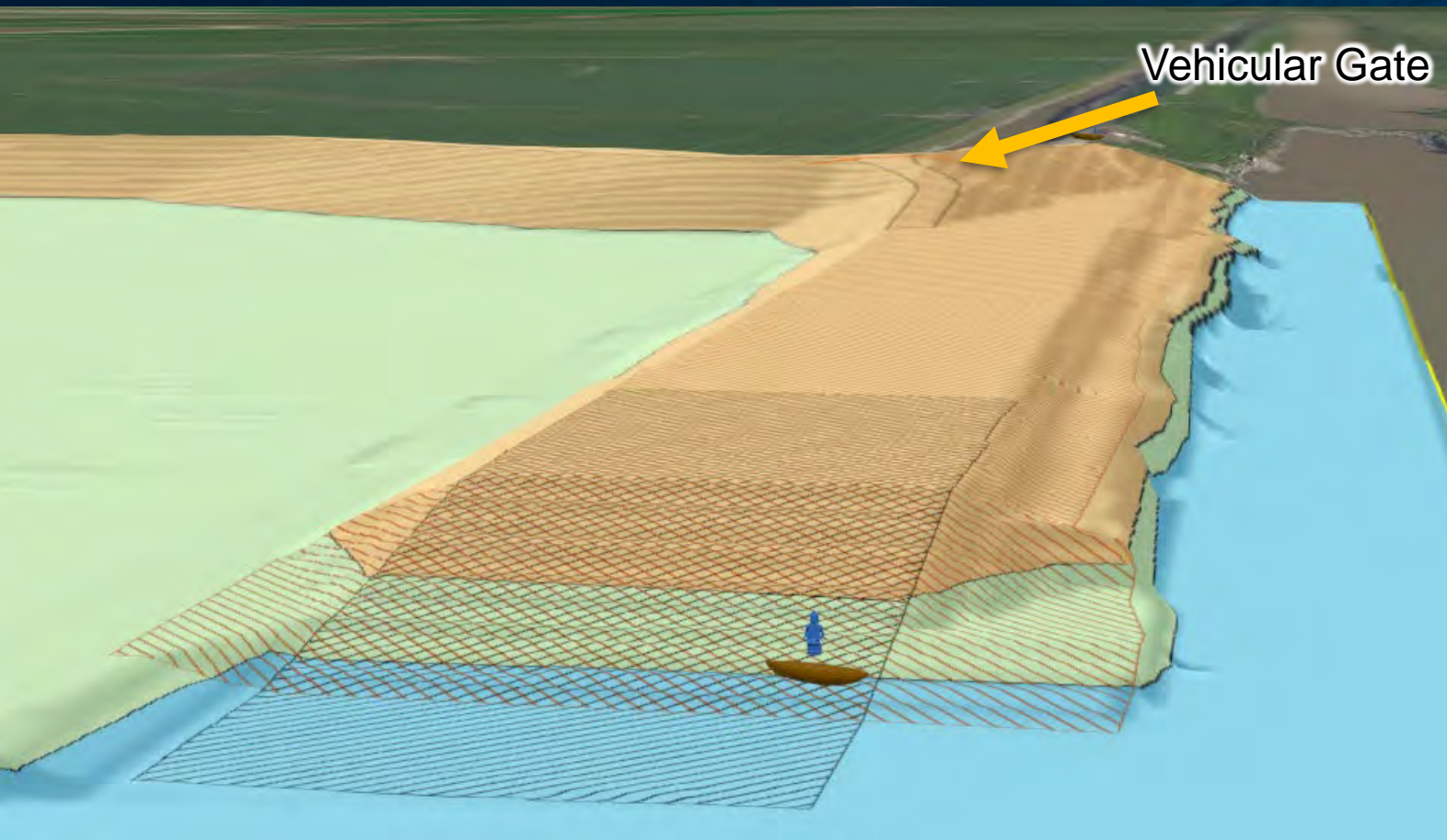
# Reducing Conflicts with Recreation







# Boat Ramp



Boat ramp design figure

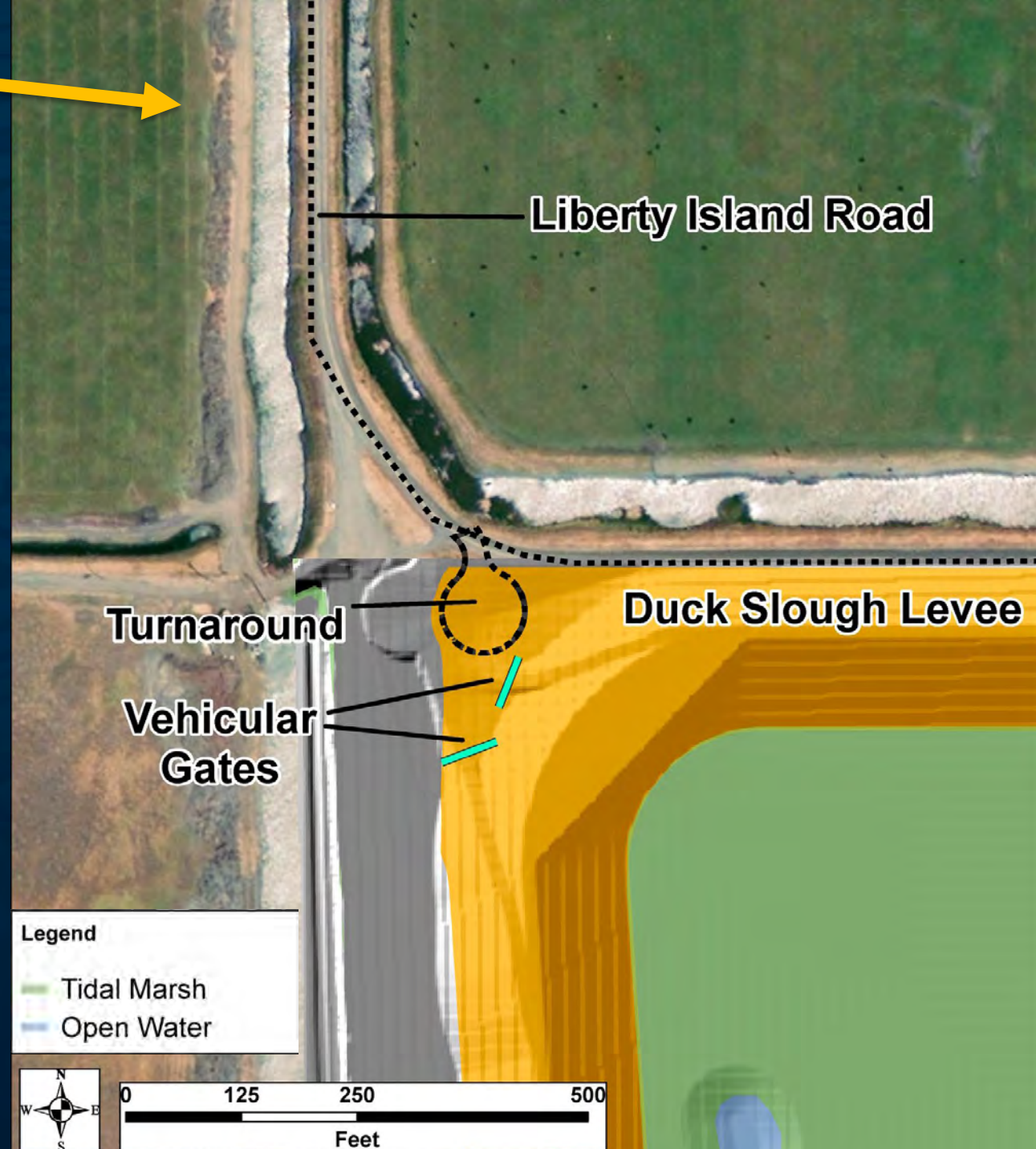
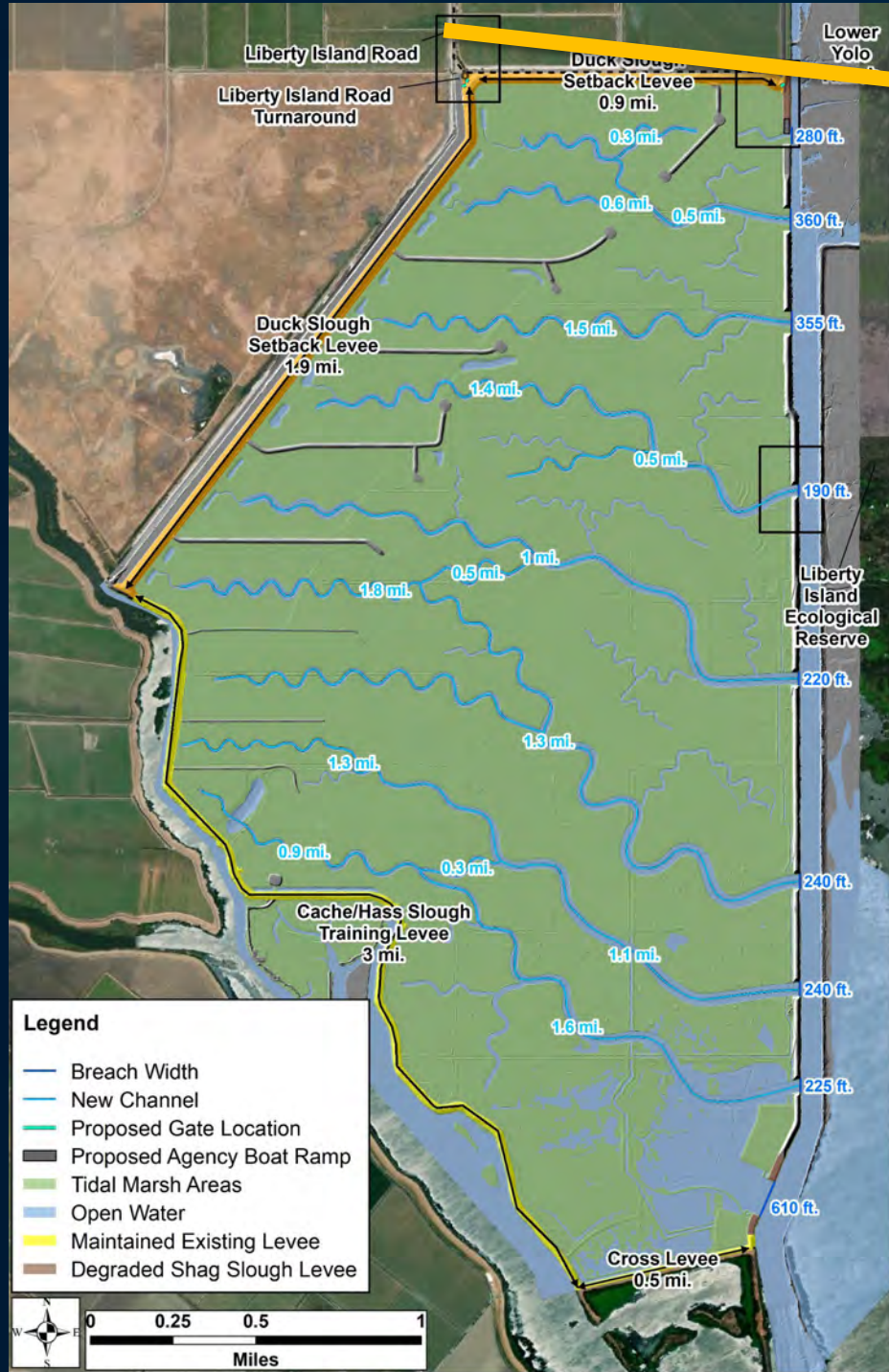


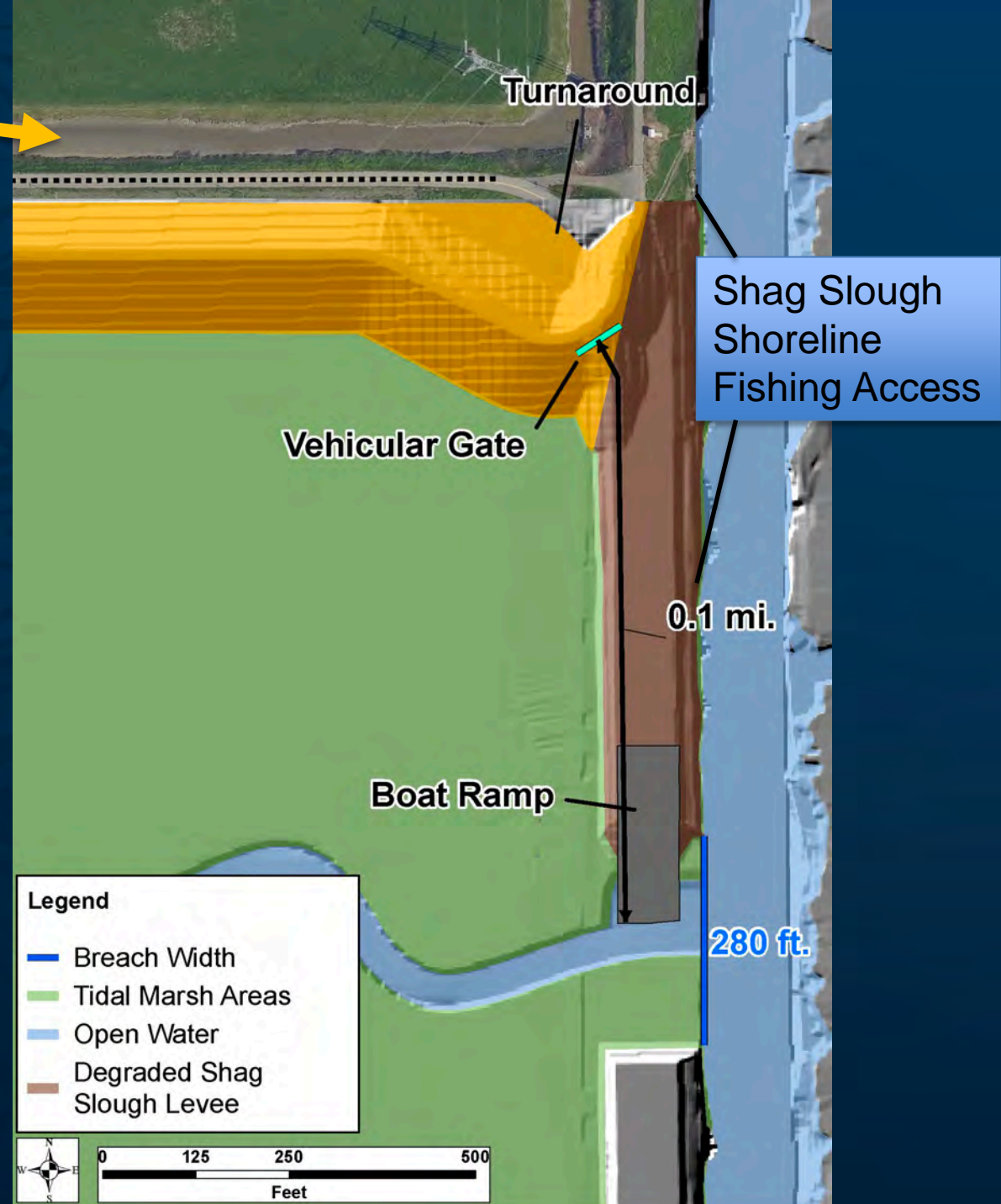
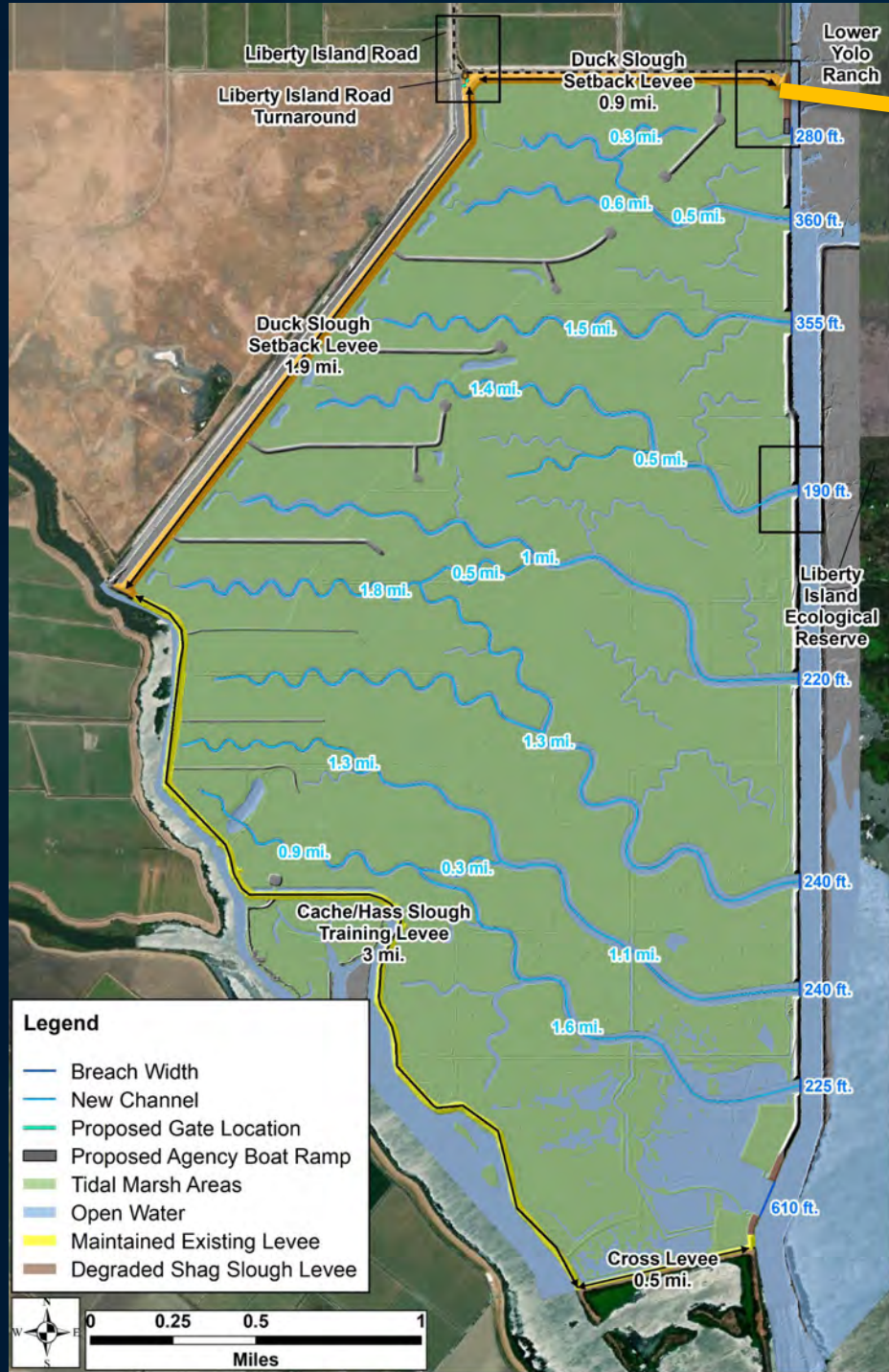
Example boat ramp constructed by DWR

# Pedestrian Access

6.3 miles of levee accessible for public walking, hiking, birdwatching & sightseeing







# Existing & Proposed

