

West (left) bank of Yolo Bypass at County Road 155					
Model Geometry	Conditional Non-Exceedance Probability (CNP)	Flood Frequency (ACE)	Without Project Peak Stage (ft. NAVD 88)	With Project Peak Stage (ft. NAVD 88)	Difference Between With and Without Project Peak Stage (ft. NAVD 88)
Baseline Condition	0.160	16.0%	19.74	19.72	-0.02
Baseline Condition	0.010	1.0%	23.85	23.74	-0.11
Baseline Condition	0.005	0.5%	24.63	24.49	-0.14
Future Cumulative Condition	0.160	16.0%	20.16	20.15	-0.01
Future Cumulative Condition	0.010	1.0%	23.26	23.20	-0.06
Future Cumulative Condition	0.005	0.5%	23.92	23.83	-0.09

Haas Slough at western boundary of RD No. 2096					
Model Geometry	Conditional Non-Exceedance Probability (CNP)	Flood Frequency (ACE)	Without Project Peak Stage (ft. NAVD 88)	With Project Peak Stage (ft. NAVD 88)	Difference Between With and Without Project Peak Stage (ft. NAVD 88)
Baseline Condition	0.160	16.0%	13.01	13.00	-0.01
Baseline Condition	0.010	1.0%	18.65	18.63	-0.02
Baseline Condition	0.005	0.5%	19.58	19.53	-0.05
Future Cumulative Condition	0.160	16.0%	11.98	11.97	-0.01
Future Cumulative Condition	0.010	1.0%	17.02	16.99	-0.03
Future Cumulative Condition	0.005	0.5%	18.12	18.11	-0.01

Cache Slough near Hastings Cut					
Model Geometry	Conditional Non-Exceedance Probability (CNP)	Flood Frequency (ACE)	Without Project Peak Stage (ft. NAVD 88)	With Project Peak Stage (ft. NAVD 88)	Difference Between With and Without Project Peak Stage (ft. NAVD 88)
Baseline Condition	0.160	16.0%	13.01	13.00	-0.01
Baseline Condition	0.010	1.0%	18.65	18.63	-0.02
Baseline Condition	0.005	0.5%	19.56	19.51	-0.05
Future Cumulative Condition	0.160	16.0%	11.98	11.97	-0.01
Future Cumulative Condition	0.010	1.0%	17.00	16.97	-0.03
Future Cumulative Condition	0.005	0.5%	18.12	18.11	-0.01

West (left) bank of Yolo Bypass at northern boundary of the Project					
Model Geometry	Conditional Non-Exceedance Probability (CNP)	Flood Frequency (ACE)	Without Project Peak Stage (ft. NAVD 88)	With Project Peak Stage (ft. NAVD 88)	Difference Between With and Without Project Peak Stage (ft. NAVD 88)
Baseline Condition	0.160	16.0%	14.81	14.36	-0.45
Baseline Condition	0.010	1.0%	20.80	20.28	-0.52
Baseline Condition	0.005	0.5%	21.77	21.22	-0.55
Future Cumulative Condition	0.160	16.0%	14.28	13.92	-0.36
Future Cumulative Condition	0.010	1.0%	19.24	18.74	-0.50
Future Cumulative Condition	0.005	0.5%	20.22	19.73	-0.49

West (left) bank of Yolo Bypass at Yolo County/Solano County Line					
Model Geometry	Conditional Non-Exceedance Probability (CNP)	Flood Frequency (ACE)	Without Project Peak Stage (ft. NAVD 88)	With Project Peak Stage (ft. NAVD 88)	Difference Between With and Without Project Peak Stage (ft. NAVD 88)
Baseline Condition	0.160	16.0%	13.68	13.57	-0.11
Baseline Condition	0.010	1.0%	19.86	19.59	-0.27
Baseline Condition	0.005	0.5%	20.84	20.55	-0.29
Future Cumulative Condition	0.160	16.0%	13.12	12.95	-0.17
Future Cumulative Condition	0.010	1.0%	18.09	17.90	-0.19
Future Cumulative Condition	0.005	0.5%	19.10	18.95	-0.15

Cache Slough at Confluence with Yolo Bypass					
Model Geometry	Conditional Non-Exceedance Probability (CNP)	Flood Frequency (ACE)	Without Project Peak Stage (ft. NAVD 88)	With Project Peak Stage (ft. NAVD 88)	Difference Between With and Without Project Peak Stage (ft. NAVD 88)
Baseline Condition	0.160	16.0%	13.01	13.00	-0.01
Baseline Condition	0.010	1.0%	18.65	18.63	-0.02
Baseline Condition	0.005	0.5%	19.54	19.52	-0.02
Future Cumulative Condition	0.160	16.0%	11.94	11.94	0.00
Future Cumulative Condition	0.010	1.0%	16.98	16.96	-0.02
Future Cumulative Condition	0.005	0.5%	18.07	18.06	-0.01

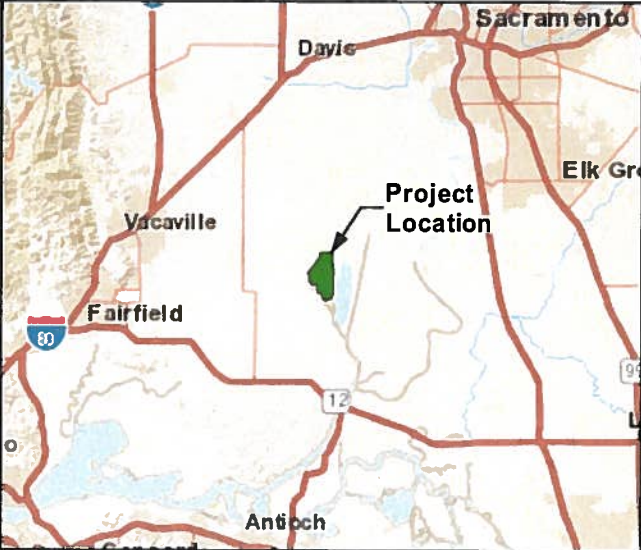
Lindsay Slough upstream of Hastings Island Road Bridge					
Model Geometry	Conditional Non-Exceedance Probability (CNP)	Flood Frequency (ACE)	Without Project Peak Stage (ft. NAVD 88)	With Project Peak Stage (ft. NAVD 88)	Difference Between With and Without Project Peak Stage (ft. NAVD 88)
Baseline Condition	0.160	16.0%	12.83	12.81	-0.02
Baseline Condition	0.010	1.0%	18.22	18.22	0.00
Baseline Condition	0.005	0.5%	19.07	19.06	-0.01
Future Cumulative Condition	0.160	16.0%	11.60	11.59	-0.01
Future Cumulative Condition	0.010	1.0%	16.47	16.44	-0.03
Future Cumulative Condition	0.005	0.5%	17.56	17.55	-0.01


Cache Slough at Ryer Island					
Model Geometry	Conditional Non-Exceedance Probability (CNP)	Flood Frequency (ACE)	Without Project Peak Stage (ft. NAVD 88)	With Project Peak Stage (ft. NAVD 88)	Difference Between With and Without Project Peak Stage (ft. NAVD 88)
Baseline Condition	0.160	16.0%	11.40	11.28	-0.12
Baseline Condition	0.010	1.0%	16.09	16.09	0.00
Baseline Condition	0.005	0.5%	17.21	17.21	0.00
Future Cumulative Condition	0.160	16.0%	10.96	10.96	0.00
Future Cumulative Condition	0.010	1.0%	15.61	15.57	-0.04
Future Cumulative Condition	0.005	0.5%	16.69	16.68	-0.01

Cache Slough at southern end of Little Egbert Tract					
Model Geometry	Conditional Non-Exceedance Probability (CNP)	Flood Frequency (ACE)	Without Project Peak Stage (ft. NAVD 88)	With Project Peak Stage (ft. NAVD 88)	Difference Between With and Without Project Peak Stage (ft. NAVD 88)
Baseline Condition	0.160	16.0%	11.41	11.36	-0.05
Baseline Condition	0.010	1.0%	13.98	13.98	0.00
Baseline Condition	0.005	0.5%	14.94	14.94	0.00
Future Cumulative Condition	0.160	16.0%	10.28	10.25	-0.01
Future Cumulative Condition	0.010	1.0%	13.85	13.85	0.00
Future Cumulative Condition	0.005	0.5%	14.80	14.80	0.00

Cache Slough at northern end of Little Egbert Tract					
Model Geometry	Conditional Non-Exceedance Probability (CNP)	Flood Frequency (ACE)	Without Project Peak Stage (ft. NAVD 88)	With Project Peak Stage (ft. NAVD 88)	Difference Between With and Without Project Peak Stage (ft. NAVD 88)
Baseline Condition	0.160	16.0%	12.19	12.15	-0.04
Baseline Condition	0.010	1.0%	17.66	17.63	-0.03
Baseline Condition	0.005	0.5%	18.59	18.56	-0.03
Future Cumulative Condition	0.160	16.0%	11.42	11.40	-0.02
Future Cumulative Condition	0.010	1.0%	16.28	16.23	-0.05
Future Cumulative Condition	0.005	0.5%	17.38	17.36	-0.02


Sacramento River at Rio Vista					
Model Geometry	Conditional Non-Exceedance Probability (CNP)	Flood Frequency (ACE)	Without Project Peak Stage (ft. NAVD 88)	With Project Peak Stage (ft. NAVD 88)	Difference Between With and Without Project Peak Stage (ft. NAVD 88)
Baseline Condition	0.160	16.0%	10.54	10.54	0.00
Baseline Condition	0.010	1.0%	11.88	11.88	0.00
Baseline Condition	0.005	0.5%	12.43	12.43	0.00
Future Cumulative Condition	0.160	16.0%	9.63	9.63	0.00
Future Cumulative Condition	0.010	1.0%	11.96	11.96	0.00
Future Cumulative Condition	0.005	0.5%	12.52	12.52	0.00








### LOOKOUT SLOUGH TIDAL HABITAT RESTORATION AND FLOOD IMPROVEMENT PROJECT

PROJECT IMPACTS AT INDEX POINTS  
SOLANO COUNTY, CALIFORNIA  
AUGUST, 2019



0 6,000 12,000 24,000  
FEET

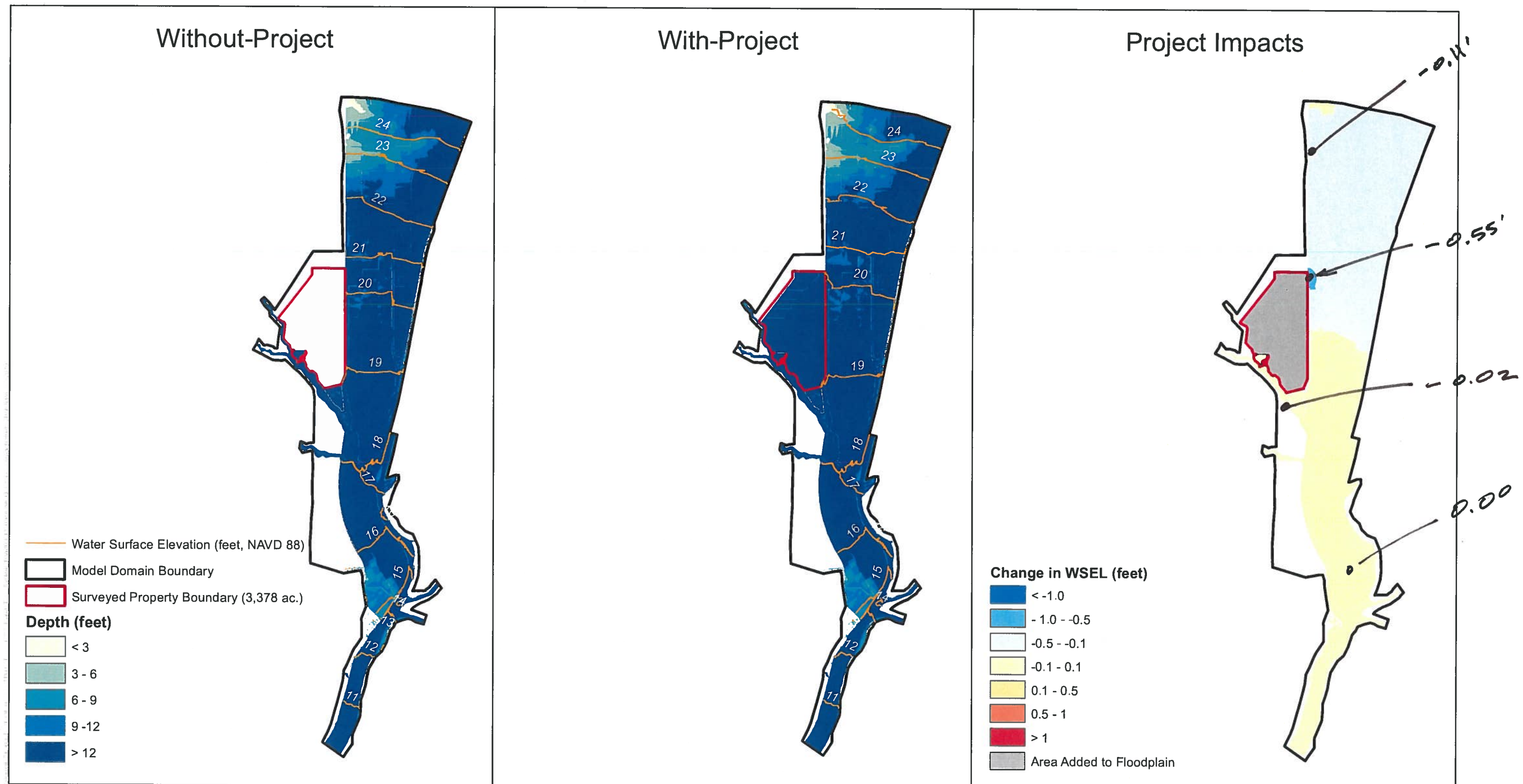
-  Project Location
-  RD 2060 and RD 2068 Levees
-  Index Point
- Sources: Esri Service Layers 2018 (World Imagery, World Topographic Map, World Street Map).
- Notes:
- Hydrology input data adapted from "Basin-Wide Feasibility Studies - Sacramento River Basin" prepared by California Department of Water Resources in 2017. Event hydrology is based on the Central Valley Hydrology Study (USACE, 2015) methodology. 10% ACE uses the 1997 pattern with 0.40 scale factor. 1% ACE uses the 1997 pattern with 0.95 scale factor, and 0.5% ACE uses the 1997 pattern with 1.10 scale factor.
  - Future Cumulative Condition represents full build-out of the Yolo Bypass Option 3 concept presented in "Basin-Wide Feasibility Studies - Sacramento River Basin" prepared by DWR in 2017.

PRELIMINARY

**WOOD RODGERS**

FIGURE 36





**Figure 40**  
**Baseline Condition Performance 1% ACE (100-year) - Stage**

Lookout Slough Tidal Habitat Restoration and Flood Improvement Project

0 15,000 30,000  
 Feet



**Ecosystem Investment Partners**

Prepared by:  
**ESA**

Map Prepared Date: 9/1/2019  
 Map Prepared By: JPrichard  
 Base Source: Wood Rodgers  
 Base Date: 10/24/2017  
 Data Source(s):